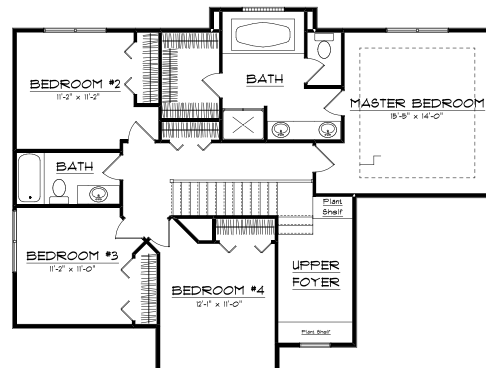
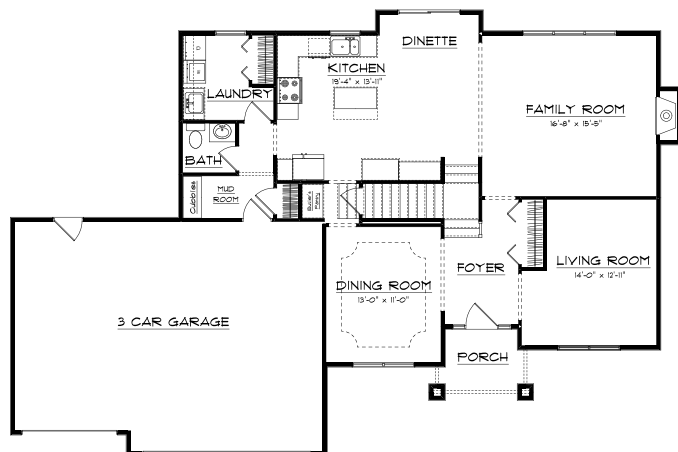




The Birchwood

Upon entering the Birchwood you are greeted by the two story foyer with its plant shelves and t-shaped stairway which conveniently leads upstairs from the kitchen and foyer. The formal living room and dining room flank the foyer. The chef's kitchen is highlighted by the large center island and dinette bay which is open to the cherry family room. The mudroom with cubbies and the laundry are located just off the kitchen near the garage. Upstairs features four large bedrooms and a master bath that will be your personal retreat. The home is complete with a full unfinished basement and a three car garage.



PLAN SUMMARY

| | |
|--------------|---------------|
| First Floor | 1,278 Sq. Ft. |
| Second Floor | 1,141 Sq. Ft. |
| TOTAL | 2,419 Sq. Ft. |



We reserve the right to modify this plan or price at any time without notice. All plans are the property of Scott Nelson Construction, Inc. Any unauthorized use or reproduction, in whole or in part, of this plan is prohibited. © 2014 Scott Nelson Construction, Inc.

1600 Spring Creek Drive • Mahomet, Illinois 61853
(217) 586-4111 • www.scottnelsonconstruction.com