



1214 MORNINGSIDE LANE



PLAN SUMMARY

 1 Story

 2,027 Square Feet

\$ 349,900

 3 Bedrooms

 2 Bathrooms

 3 Car Garage

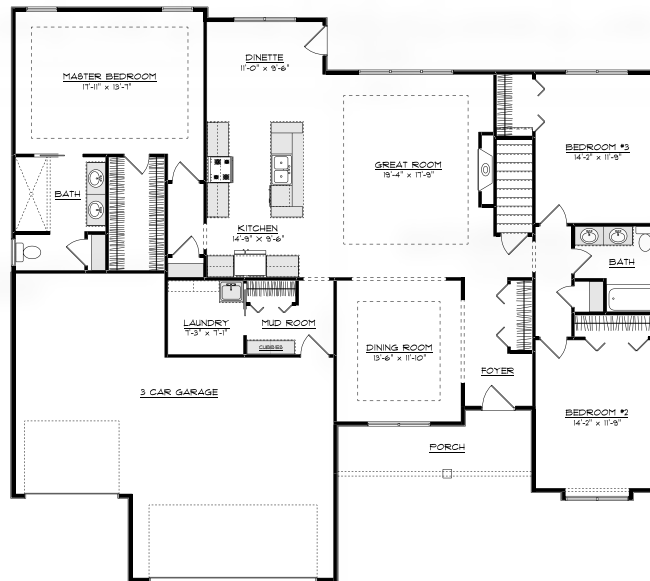
217.586.4111

WWW.NELSON.BUILDERS



COMMITTED TO BUILDING 100% ENERGY STAR HOMES

1214 MORNINGSIDE LANE - MAHOMET, IL



\$349,900

Upon entering the front door of this new ENERGY STAR Certified Home by Nelson Builders, you are greeted by the open and airy floor plan. At the center of this space is the chefs dream kitchen with its huge center island. The kitchen also features custom made Amish cabinetry and quartz countertops with plenty of room for all your cooking needs. The important drop zone from the garage to house is lined with cubbies and has easy access to the laundry room. The split bedroom plan allows for privacy in the master bedroom suite on one side of the home while the other bedrooms are located on the opposite end. Crown moulding and a tray ceiling highlight the family room and master bedroom. The spa-like master bath features high-end finishes, rivaling many of the looks that are so popular today. Our commitment to energy efficiency means this, and every home we build, will be designed to earn the ENERGY STAR certification; going far beyond todays building codes to bring you real savings. We accomplish this by using advanced framing techniques, a combination of spray foam and blown-in cellulose, and continuous foam sheathing on the exterior with all the seams taped. Going further, we install high-efficiency mechanical systems and every home we build comes standard with a tankless hot-water heater, 96.5% furnace with 14.0 SEER A/C, and 100% LED light bulbs in all fixtures. Take a moment to compare and you will find no one comes close to our pledge on energy efficiency!



Lot Size	82 x 125 x 82 x 125
Bedrooms	3
Bathrooms	2
Garage	3 Car Attached
Basement	Full Unfinished
Exterior	Vinyl
Roof	Asphalt Shingle
Schools	Mahomet

First Floor	2,027 Sq Ft
TOTAL	2,027 Sq Ft
Basement (Unfinished)	2,027 Sq Ft

Great Room	19'-4" x 17'-9"
Dining Room	13'-6" x 11'-10"
Kitchen	25'-9" x 9'-6"
Laundry Room	7'-3" x 7'-1"
Master Bedroom	17'-11" x 13'-7"
Bedroom 2	14'-2" x 11'-9"
Bedroom 3	14'-2" x 11'-9"

2018.02.24

WWW.NELSON.BUILDERS/FOR-SALE/1214-MORNINGSIDE-LANE

While we make every effort to present accurate information about our homes, we cannot guarantee the accuracy of information contained on this sheet. Interested parties are advised to independently verify this information through personal inspection or with appropriate professionals. Any unauthorized use of this plan, in whole or in part, is prohibited.
© 2018 Nelson Builders