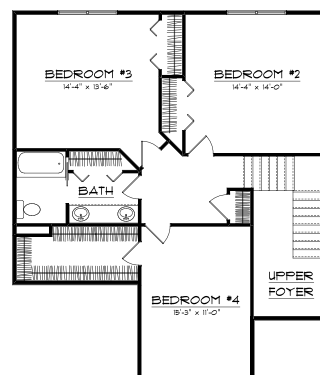
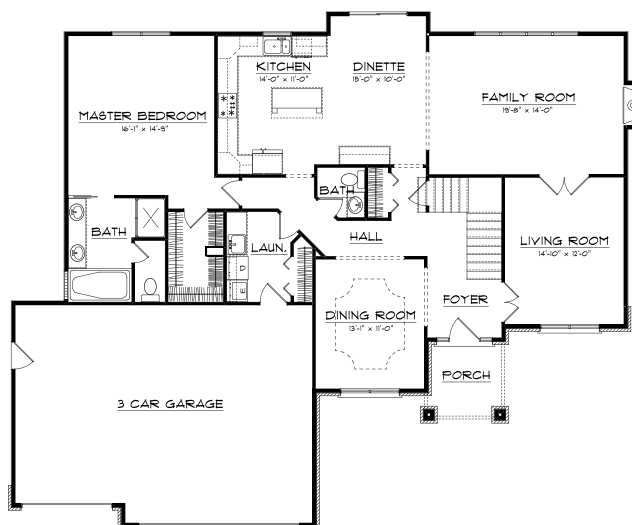




The Salem

The brick and stone arched front porch leads into the 2 story foyer which is highlighted by the richly trimmed front door with transom, L-shaped stairway, and French doors leading to the living room. The gourmet kitchen features a center island, U-shaped cabinet layout, generous dinette, and kitchen desk station which all open unto the family room through the arched and columned opening. The master bedroom with its large closet and sumptuous bath are located on the first floor. Upstairs are three large bedrooms and ample closet space. The basement is finished with a bedroom, full bath, and large family room. Abundant basement storage and a three car garage complete the plan.



PLAN SUMMARY

First Floor	1,775 Sq. Ft.
Second Floor	906 Sq. Ft.
TOTAL	2,681 Sq. Ft.



We reserve the right to modify this plan or price at any time without notice. All plans are the property of Scott Nelson Construction, Inc. Any unauthorized use or reproduction, in whole or in part, of this plan is prohibited. © 2014 Scott Nelson Construction, Inc.

1600 Spring Creek Drive • Mahomet, Illinois 61853
(217) 586-4111 • www.scottnelsonconstruction.com