

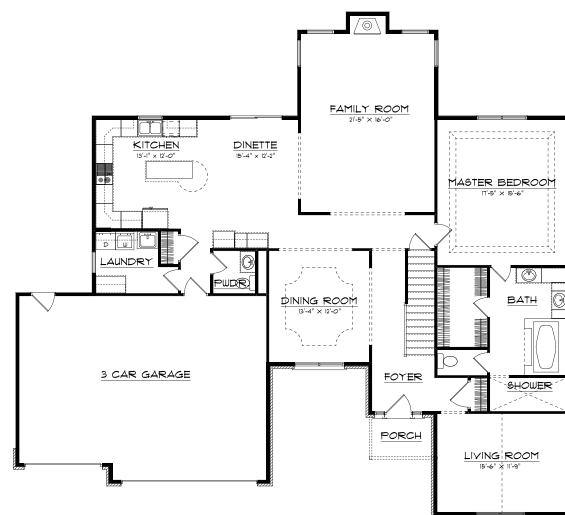


The Providence

The first floor of the Providence is an open designed plan with archways connecting the kitchen, which features a center island with eat-in area, desk unit, and pantry, with the light-filled family room, dining room, and vaulted foyer. The vaulted living room, with its arch top window, is often used as a home office. The first floor is highlighted by the master suite which showcases a master bath retreat, with whirlpool tub surrounded by columns and arches, a ceramic tile walk-in shower, and L-shaped double vanities. Upstairs, there are three generous sized bedrooms with abundant closet space. The home is complete with an unfinished partial basement and a three car garage.

PLAN SUMMARY

First Floor	2,028 Sq. Ft.
Second Floor	900 Sq. Ft.
TOTAL	2,928 Sq. Ft.



We reserve the right to modify this plan or price at any time without notice. All plans are the property of Scott Nelson Construction, Inc. Any unauthorized use or reproduction, in whole or in part, of this plan is prohibited. © 2014 Scott Nelson Construction, Inc.



1600 Spring Creek Drive • Mahomet, Illinois 61853
(217) 586-4111 • www.scottnelsonconstruction.com