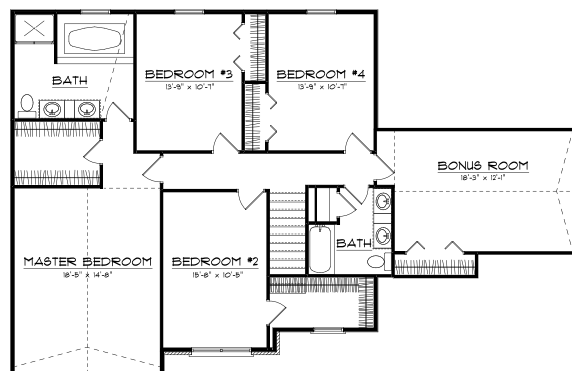
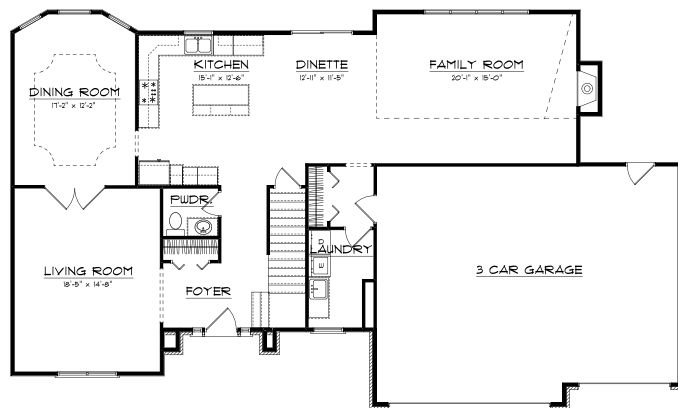




## *The Plymouth*

The Plymouth is an outstanding family home. There is abundant space upstairs with four bedrooms and a bonus room that can be used as a playroom or home office. The master bedroom, master bath, and bonus room all feature vaulted ceilings. The first floor offers a large living room that opens through the French doors into the dining room with its bay windows and trey ceiling. The kitchen which features an eat-in island and desk unit flows into the family room which has a vaulted ceiling, plant shelf, fireplace, and bookcases. The home is complete with an unfinished full basement and a three car garage.



### **PLAN SUMMARY**

First Floor	1,515 Sq. Ft.
Second Floor	1,547 Sq. Ft.
<b>TOTAL</b>	<b>3,062 Sq. Ft.</b>



*We reserve the right to modify this plan or price at any time without notice. All plans are the property of Scott Nelson Construction, Inc. Any unauthorized use or reproduction, in whole or in part, of this plan is prohibited. © 2014 Scott Nelson Construction, Inc.*

**1600 Spring Creek Drive • Mahomet, Illinois 61853**  
**(217) 586-4111 • [www.scottnelsonconstruction.com](http://www.scottnelsonconstruction.com)**